

IDEAL FOR  
RETAIL  
INSTALLS

# BT8380-FFB

## FIXED FLOOR BASE FOR SYSTEM X



Designed to securely fix System X installations to the floor, the BT8380-FFB Fixed Floor Base attaches directly to any BT8380 vertical column to create a fixed position mounting solution with a minimal footprint. Using a 6mm thick steel plate, this base is strong enough to support loads of up to 200kg per column and is ideal for installations where floor space is limited, such as retail applications which require screens to be mounted closer to walls or shop windows.

### SPECIFICATION

Max Load	200kg (per column)*
Plate Thickness	6mm
Bases Supplied	1
Colour	Black

\*No more than 100kg should be mounted at a height above 1.2m - see assembly leaflet for more info

### FEATURES

- Small footprint for an un-obtrusive installation into confined areas
- Heavy duty steel capable of supporting substantial loads
- High-end aesthetic quality
- Ideal for retail applications where floor space is limited such as in shop windows or for close to the wall displays
- Can be used for large scale video wall installations in straight or curved configurations - ideal for applications such as control rooms
- Can be used for a single column installation of up to 4 screens tall\*\*
- Must be used with a BT8380 Vertical Column
- Comes included with any BT8372 Bolt Down Video Wall Stands
- Integrated cable management
- Available in Black

\*\*Dependent on screen size and weight



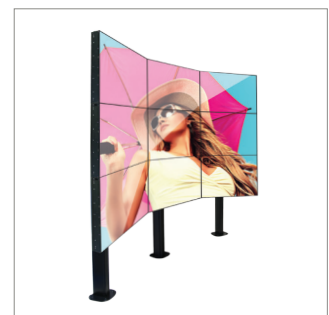
Must be used with System X mounting solutions using **BT8380** vertical columns



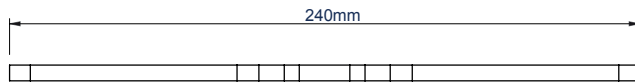
Can be used for single column installations in landscape or portrait format



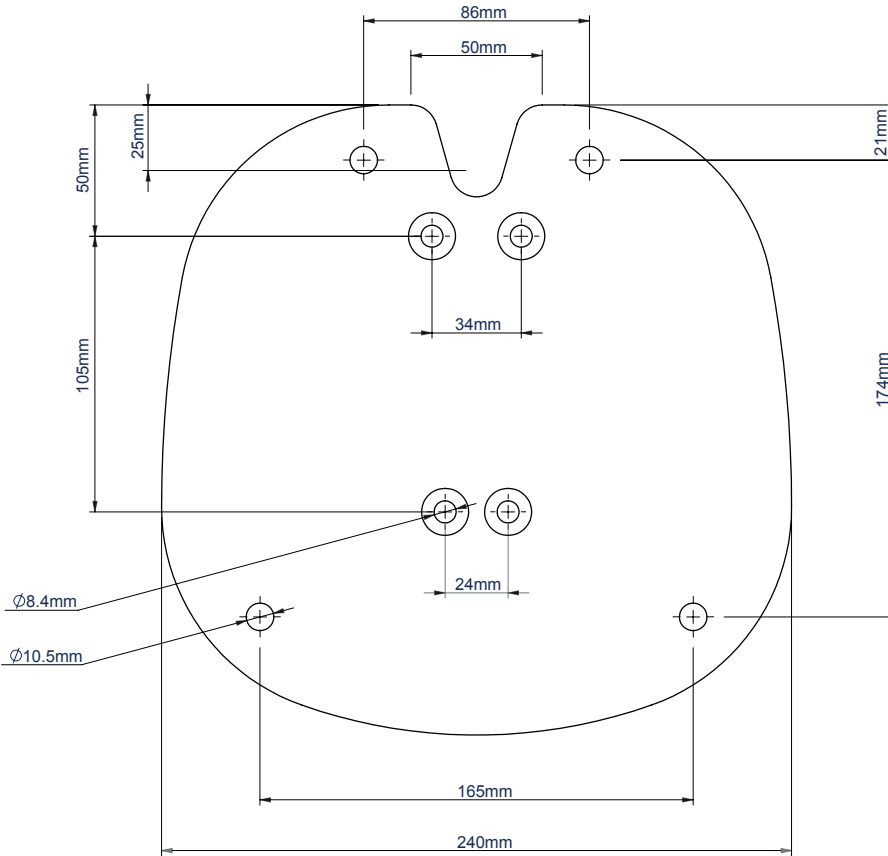
Integrated cable management for a neat and tidy installation



Can be used for large scale straight or curved installations - ideal for control rooms



FRONT VIEW



TOP VIEW



SIDE VIEW

PACKING INFORMATION

COLOUR:	ORDER REF:	EAN CODE:	MASTER CARTON QTY:	INNER CARTON QTY:	MASTER CARTON WEIGHT:	MASTER CARTON CUBE:
Black	BT8380-FFB/B	5019318080197	1	0	2.435kg	0.0012cbm

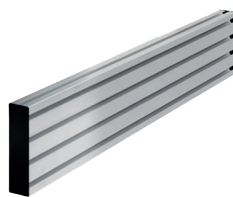
ACCESSORIES AND RELATED PRODUCTS TO THE BT8380-FFB

BT8380



System X Vertical Support Columns available in 1.2m and 2.4m lengths

BT8390



System X Horizontal Mounting Rail fit to vertical columns using BT8390-JPK

BT8372-2X2



Universal Bolt Down Video Wall Stand for 2x2 Video Walls

BT8372-3X3



Universal Bolt Down Video Wall Stand for 3x3 Video Walls

© 2016 B-Tech International Pty Ltd. All rights reserved.  
 The information in this specification is current technical specifications at the time of print.  
 We warrant the goods to be free from defects in materials and workmanship for a period of 12 months from the date of purchase.  
 B-Tech International Pty Ltd. is not liable for loss or damage caused by improper or negligent installation or use of the goods.  
 Specifications are subject to change without notice. Any reproduction or misrepresentation of any part of this specification is strictly prohibited unless prior written permission has been granted by B-Tech International Pty Ltd.

SS-BT8380-FFB-V1.1 - 240316